



# COMBILINE

★★★★



## INSURABLE RATING

Recommended up to \$35,000



## SECURITY GRADE S2

Certified protection against burglary



## FIRE RESISTANCE GRADE LFS 30 P

Certified protection against fire



CL 10



CL 20



CL 40



CL 60

[www.burgsecurity.com.au](http://www.burgsecurity.com.au)



# COMBILINE



## CL 10–CL 60 safety cabinets ‘Combi-Line’

- Type tested and supervised security by ECB-S/VdS
- BURG-WÄCHTER safety cabinets with a certification which is valid all over Europe. For the safe storage of documents, cash, jewellery, arms or ammunition, coins and valuables.
- Security Level S 2 according to DIN EN 14450
- Security Level B according to VDMA 24992, May 1995
- Fire resistance LFS 30 P according to EN 15659 – 30 minutes fire protection for paper
- Fire-protective material according to DIN 4102
- Composite insulation in front of the door leaf provides heat protection for the lock and bolts
- Tested and certified protection against burglary and fire
- Double-walled construction
- Internal hinge
- Lateral locking through 25mm diameter strong round bolts plus sliding bolt on the top
- All-over gripping rail on the hinge side
- Prepared for both wall and floor fixing, 2 diagonally arranged drill holes on the back wall and 2 on the bottom
- Fixings included
- Colour: body grey, door light grey
- Model S supplied with 2 keys
- Standard series with 1 shelf each

### Version - E (Electronic)

Article	Exterior H x W x D	Interior H x W x D	Door H x W	Weight	Litres
	mm	mm	Opening mm	kg	l
CL 10 E	320 x 435 x 380	205 x 320 x 232	205 x 265	44,0	15,0
CL 20 E	360 x 495 x 445	245 x 380 x 297	245 x 325	55,0	27,0
CL 40 E	560 x 495 x 445	445 x 380 x 297	445 x 325	77,0	50,0
CL 60 E	820 x 495 x 445	694 x 380 x 297	694 x 324	111,0	78,0



Electronic combination lock ‘SecuTronic’, VdS tested, ECB-S certified according to EN 1300 class B, 1.000.000 different combinations possible, incl. 3 batteries, type Micro LR 03 AAA. The locking armature protrudes 7 mm.

### Version - S (Keyed)

Article	Exterior H x W x D	Interior H x W x D	Door H x W	Weight	Litres
	mm	mm	Opening mm	kg	l
CL 10 S	320 x 435 x 380	205 x 320 x 232	205 x 265	44,0	15,0
CL 20 S	360 x 495 x 445	245 x 380 x 297	245 x 325	55,0	27,0
CL 40 S	560 x 495 x 445	445 x 380 x 297	445 x 325	77,0	50,0



Security safe lock ‘SecuSafe’, VdS tested, ECB.S certified according to EN 1300 class A, 9 levers, more than 1.000.000 key differs.



Special protection  
against burglary  
and fire.



**FIRE RESISTANCE GRADE LFS 30 P**  
Certified protection against fire



**RESISTANCE GRADE S2**  
Certified protection against burglary



Currently the only certified  
safe lock with  
fingerprint module



Version - E FS (Electronic Fingerscan)

Article	Exterior H x W x D	Interior H x W x D	Door H x W	Weight	Litres
	mm	mm	Opening mm	kg	l
CL 10 EFS	320 x 435 x 380	205 x 320 x 232	205 x 265	44,0	15,0
CL 20 EFS	360 x 495 x 445	245 x 380 x 297	245 x 325	55,0	27,0
CL 40 EFS	560 x 495 x 445	445 x 380 x 297	445 x 325	77,0	50,0
CL 60 EFS	820 x 495 x 445	694 x 380 x 297	694 x 324	111,0	78,0

**Electronic Fingerscan Features**  
Programmable electronic lock 'SecuTronic' with integrated fingerscan module, VdS certified according to EN 1300 class 1, 1,000,000 different combinations possible. 6-digit user-programmed numerical code up to 10 fingers can be programmed (for opening with fingerscan, two fingers must be programmed/entered. Batteries included. The locking armature protrudes 13mm.

Sizes



CL 10



CL 20



CL 40



CL 60



Dealer Display





SecuTronic / SecuSafe

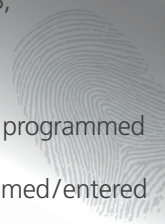
# Choose your personal locking method.

VdS  
TESTED

Currently the only certified safe lock with fingerscan module

## SecuTronic – the first biometric safe lock with VdS certification.

- Developed by BURG-WÄCHTER
- Certified safe lock with integrated fingerscan module according to VdS, EN 1300 class 1
- Programmable electronic combination lock 'SecuTronic' with integrated fingerscan module
- In addition to a 6-digit user programmed code, up to 10 fingers can be programmed
- 1.000.000 different combinations possible
- When opening with fingerscan, 2 different fingers have to be programmed/entered
- The scanner only works with 'real, live, fingers'. Fake fingers or copies will not be identified
- The precise and highly sensitive procedure of authentication operates with different dermal conditions
- The opening of a safe by using the fingerscan is very quick and comfortable



## 'SecuTronic' – electronic combination lock

- VdS tested, ECB-S certified according to EN 1300 class B
- 1.000.000 different combinations possible



## Security safe lock 'SecuSafe' – the high security safe lock

- Armored double bitted security lock
- VdS tested, ECB-S certified according to EN 1300 class A
- 9 levers
- More than 1.000.000 key differs



Changes in price and product quality reserved at any time. The data presented is the latest available.  
Minor variations of sizes and weight depend on production characteristics. Typesetting and printing errors reserved.

0816